

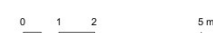
 Tile - floor

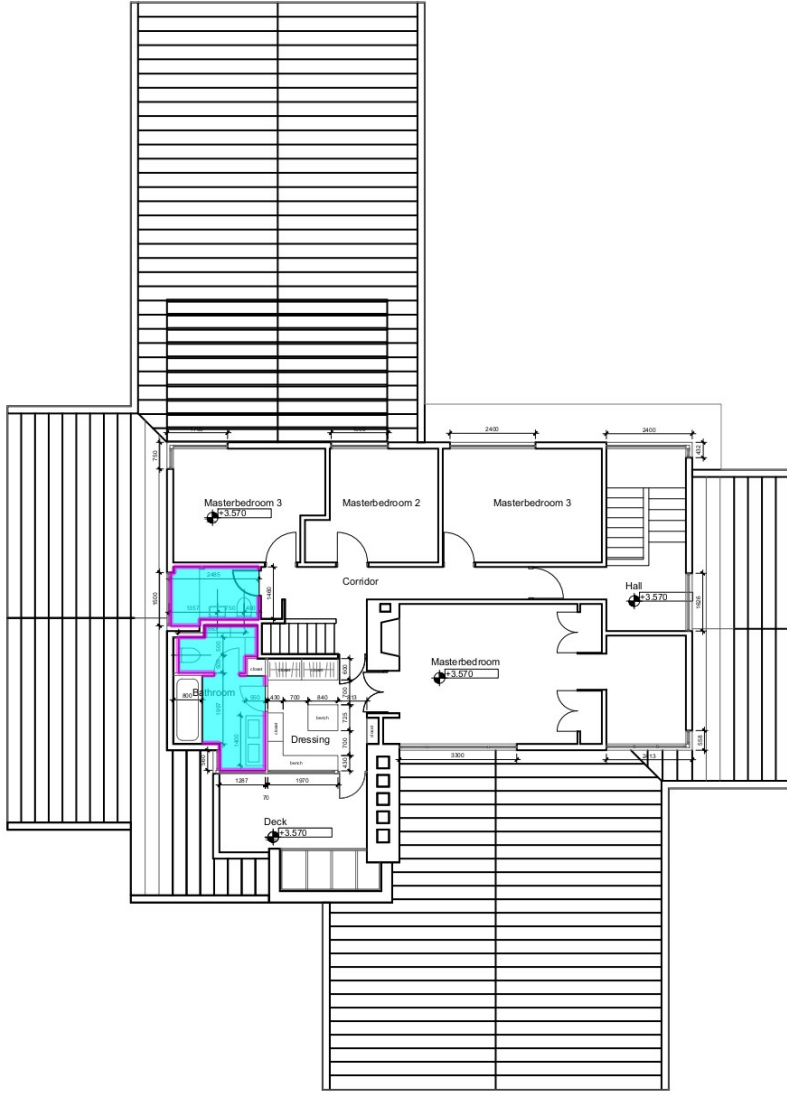
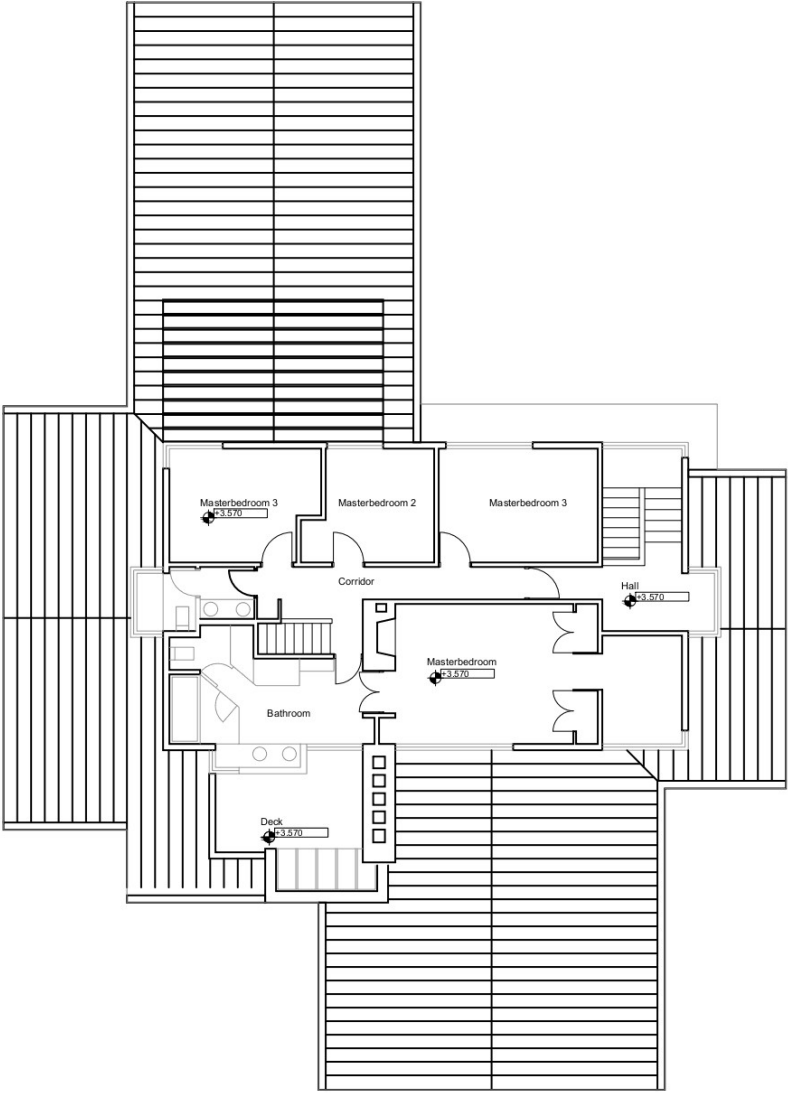
 Tile - wall (9' tall)

74.0 SQ FT

18.2 FT

AR_005
Groundfloor plan - Current layout / Project
layout
1:200





Project layout

 Tile - floor

 Tile - wall (8' tall)

114.9 SQ FT

62.6 FT

AR_007
Sesondfloor plan - Current layout / Project
layout
1:200

